

# AAC20

Constant current LED driver(Non-isolated)



## Product family features

- Input Voltage: 220 to 240VAC (maximum: 198-264 VAC)
- Output Frequency: 50-60Hz
- Output Power: 20Watt Max
- Output Voltage: 40Vdc to 60Vdc
- Output Voltage: 350mA
- Efficiency: Up to 88%
- Adopting a 22mm flat plastic casing, it achieves a slim lamp design.



## Technical data

### Electrical Parameter

Product Modle	output Power (W)	Output Voltage (Vdc)	Output Constant Current (mA)	Current Accuracy (typ.)	Max Eff	Certification
AAC20-C350	20	40-60	350	±5%	88%	CE
AAC20-C350-A	20	40-60	350	±5%	88%	CE

Note:  
1.Maximum efficiency measured at 230VAC input, Current set at 350mA full load.  
2.The standard AAC series only supports Class II EMC standards, while models with the \*\*\*"-A" suffix\*\* comply with Class I EMC standards.

# Product datasheet

## Technical data

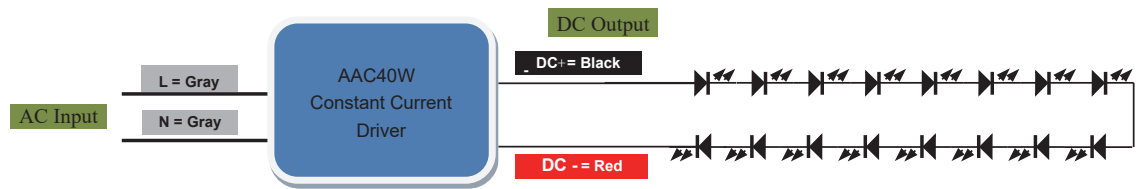
### Electrical Specifications

	Item	Value	Remarks
Input	Nominal voltage	220-240V	
	Nominal frequency	50/60HZ	
	AC voltage range	198-264V	
	Nominal current	120mA	230V, Refer to Table 1 for details
	THD	<20%	@ full load
	Power Factor (PF)	≥0.9	Full load, 220 – 240 V, 50 Hz / see graphs
	Maximum voltage	270V	2 h maximum, unit might not operate in this abnormal condition
	Efficiency	88%	Full load, 220 – 240 V, 50 Hz / see graphs
	Power loss	2W	At 230V, Refer to Table 1 for details
	Protection class	II	Suitable for class I/II luminaire
	Inrush current	40A	twidth = 50 us typical (measured at 50% Ipeak)
output	Nominal voltage range	40-60V	
	Maximum voltage	< 250	w/ Open Circuit
	Nominal current range	350mA	
	Current accuracy	±5%	
	Current ripple 100Hz	< 10%	
	Nominal power range	14-20W	Partial Load. Refer to Table 1 for details
	Maximum power	20W	
	Galvanic isolation	Non-isolated	
	Output PSTLM	≤1	
	Output SVM	≤0.4	
environmen	Ambient temperature range ta	-20 ...45°C	
	Maximum case temperature tc	90°C	Measured on tc point indicated of the product label
	Max. case temp. in fault condition	85°C	
	Storage temperature range	-20 ...85°C	
	Relative humidity	5%-95%	Not condensing
	Surge transient protection	1   2KV	L/N   LN/PE acc to. EN 61547 Clause 5.7
	Environmental rating	Indoor	
	IP rating	IP20	
	Mains switching cycles	>50000	
	Expected lifetime	30000 50000	tcm <sub>ax</sub> = 75°C, 10% failure rate tcm <sub>ax</sub> = 65°C, 10% failure rate

# Product datasheet

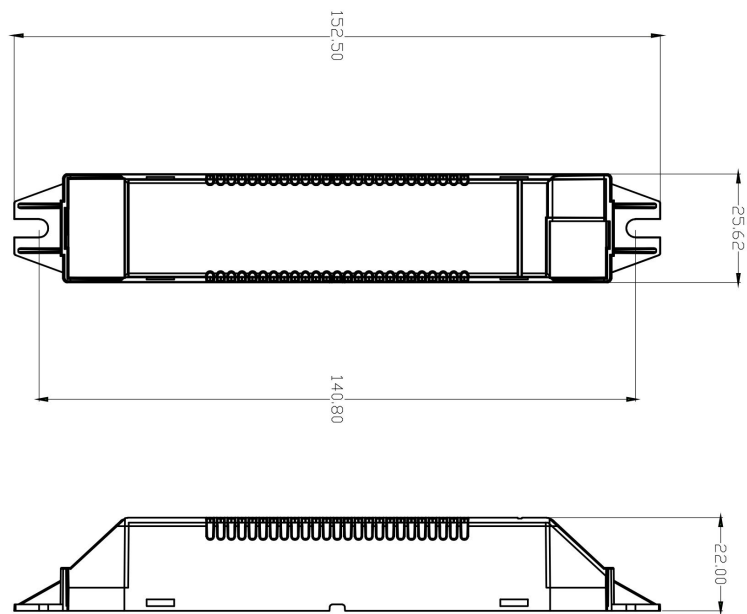
## Typical Applications

Constant Current Driver



## Appearance information

Product Size



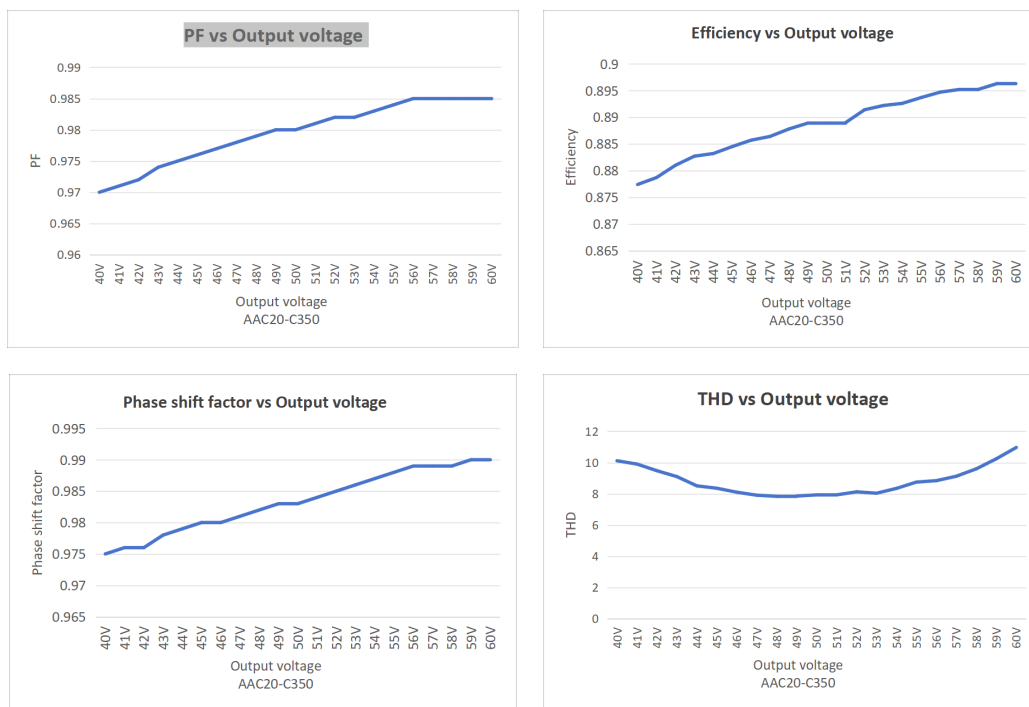
Note:

The independent LED drive conforms to the EMC standard. But it is not guaranteed to be qualified when the drive is mounted in the LED fixture

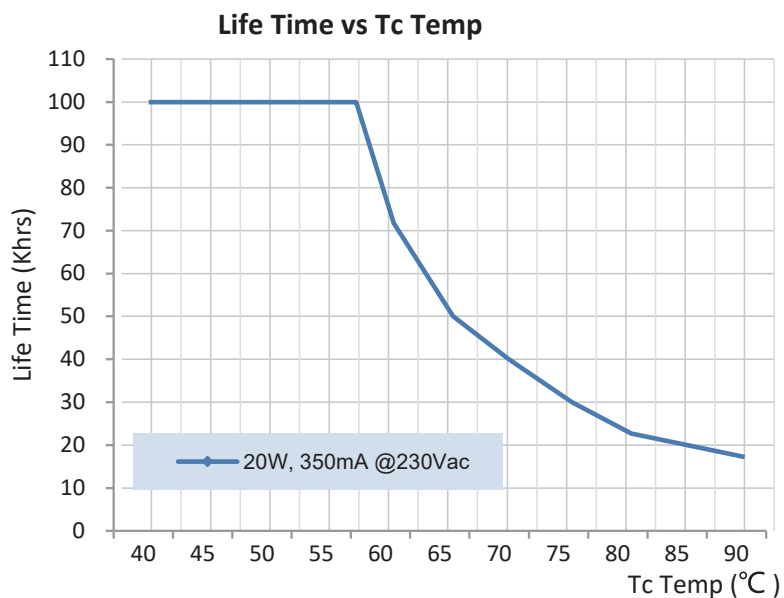
Please forgive us for any discrepancy due to the update of the specifications or the upgrade of the product. If you need the latest information, please contact our marketing department

# Product datasheet

## Characteristic Curve



## Lifetime Curve



## Installation

AC input wires cross section: 0.5~1.5mm<sup>2</sup>

DC output wires cross section: 0.75~1.5mm<sup>2</sup>

This product for indoor use only, it can be installed and fixed in the luminaires, connected with the wire. The length of output line should be less than 2m