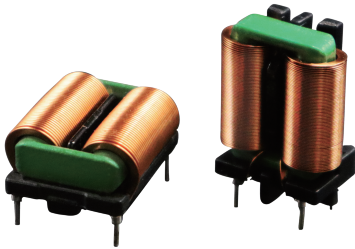


FRAME CORE CHOKES FOR POWER LINES

FACCF2820 SERIES

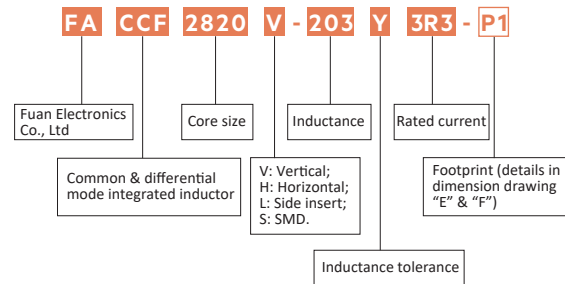


ELECTRICAL SPECIFICATION

- Rated voltage: 85~264 VAC
- Turns ratio: N1:N2=1:1±2%
- Hi-pot: 1500VAC/1mA/2second
- Operating temperature range: -40°C to+120°C
- Temperature Rise: 40°C Ref. at rated current
- All parts meet RoHS compliant
- Insulation grade: Class F
- Weight: 35.0g (reference)

FEATURES

- Small size, low leakage flux due to SQ core
- Low stray capacitance, high attenuation of a wide frequency band
- There is no danger of the layer short for the single-layer rolling
- High attenuation to the normal mode noise
- Winding time 90% down
- High inductance was achieved by the ferrite mixing and the baking technology that developed originally



ELECTRICAL CHARACTERISTICS AT 25°C (V & H Series)

Part Number	Part Number	Ind.(mH) 1KHz 0.25V Min	Lstray (uH) Typ	D.C.Resistance (mohms) Max	Rated Current (A)Typ	Wire (mm)
FACCF2820V-203Y3R3-□	FACCF2820H-203Y3R3-□	20.00	198	110	3.30	0.30*1.5
FACCF2820V-153Y3R3-□	FACCF2820H-153Y3R3-□	15.00	168	100	3.30	0.30*1.5
FACCF2820V-103Y3R3-□	FACCF2820H-103Y3R3-□	10.00	168	100	3.30	0.30*1.5
FACCF2820V-602Y3R3-□	FACCF2820H-602Y3R3-□	6.00	168	100	3.30	0.30*1.5
FACCF2820V-153Y4R2-□	FACCF2820H-153Y4R2-□	15.00	128	65	4.20	0.40*1.5
FACCF2820V-103Y4R2-□	FACCF2820H-103Y4R2-□	10.00	108	65	4.20	0.40*1.5
FACCF2820V-702Y4R2-□	FACCF2820H-702Y4R2-□	7.00	108	65	4.20	0.40*1.5
FACCF2820V-402Y4R2-□	FACCF2S20H-402Y4R2-□	4.00	108	65	4.20	0.40*1.5

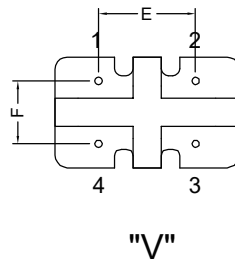
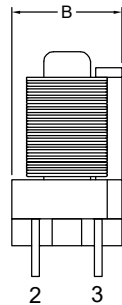
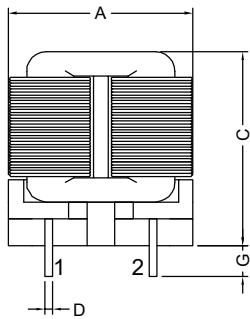
Product datasheet

ELECTRICAL CHARACTERISTICS AT 25°C (L Series)

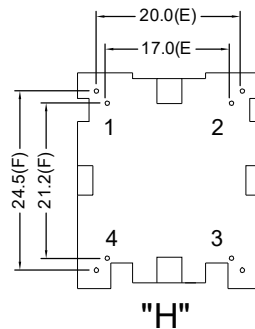
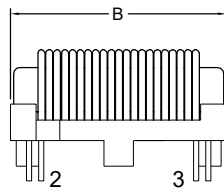
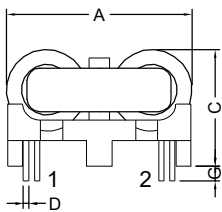
Part Number	Ind.(mH) 1KHz 0.25V Min	Lstray (uH) Typ	D.C.Resistance (mohms) Max	Rated Current (A)Typ	Wire (mm)
FACCF2820L-203Y3R3-□	20.00	198	110	3.30	0.30*1.5
FACCF2820L-153Y3R3-□	15.00	168	100	3.30	0.30*1.0
FACCF2820L-103Y3R3-□	10.00	168	100	3.30	0.30*1.0
FACCF2820L-602Y3R3-□	6.00	168	100	3.30	0.30*1.0
FACCF2820L-153Y4R2-□	15.00	128	65	4.20	0.40*1.5
FACCF2820L-103Y4R2-□	10.00	108	65	4.20	0.40*1.5
FACCF2820L-702Y4R2-□	7.00	108	65	4.20	0.40*1.5
FACCF2820L-402Y4R2-□	4.00	108	65	4.20	0.40*1.5

ELECTRICAL INFORMATION

Dimension in mm



	A Max	B Max	C Max	D ±0.1	E ±0.5	F ±0.5	G ±0.5
-P1	24.0	14.0	35.5	0.80	13.0	10.0	3.50

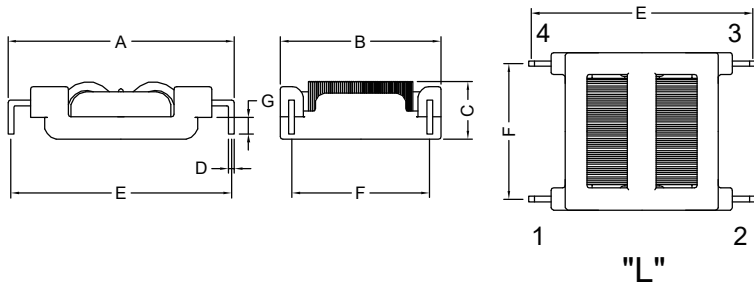


	A Max	B Max	C Max	D ±0.1	E ±0.5	F ±0.5	G ±0.5
-P1	27.0	30.0	17.0	0.70	20.0	24.5	3.50

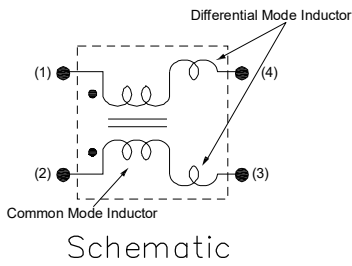
Product datasheet

ELECTRICAL INFORMATION

Dimension in mm



	A Max	B Max	C Max	D ± 0.1	E ± 0.5	F ± 0.5	G ± 0.5
-P1	43.0	31.5	12.0	1.00	40.8	26.5	3.50



CURRENT VS TEMPERATURE RISE

