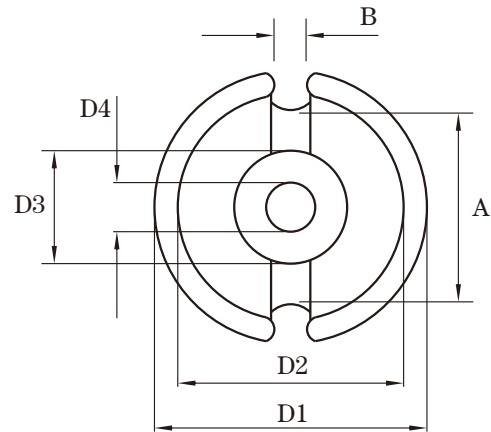
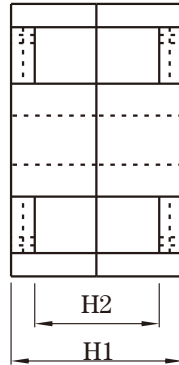


Dimension: (UNIT:mm)

D1	69.0 ± 1.2
D2	58.5 ± 0.9
D3	29.0 ± 0.5
D4	8.5 ± 0.5
A	48.2 ± 0.8
B	10.5 ± 0.5
H1	28.0 ± 0.4
H2	18.6 ± 0.6

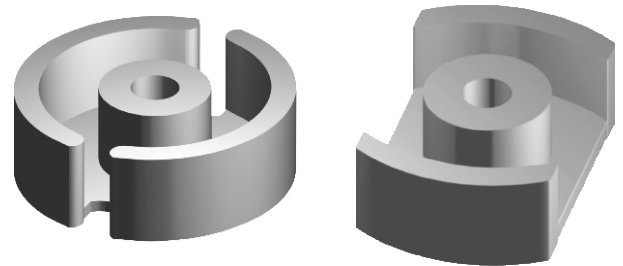


Test conditions

AL: F=1.0KHz U=0.3V N=10Ts

Effective parameter

C1(mm) ⁻¹	Ae(mm ²)	Le(mm)	Ve(mm ³)	Weight(g)
0.13	624.9	78.49	49045	≈ 185



Core sets for general purpose transformers and power applications.

Clamping force for Al measurements, 10+/-5N.

Grade	AL (nH)	μe	AIR GAP μm	Type number
P3	15000±25%		≈0	P6928-P3

Properties of core sets under power conditions

Grade	B (mT) at	Core loss (w) at			
	H=250 A/m F=25KHz T=100°C	F=25 KHz B=200mT T=100°C	f=100 KHz B=100mT T=100°C	F=100 KHz B=200 mT T=100°C	F=400 KHz B=50mT T=100°C
P3	≥330				

Note:

- 1: Document is the property of FUAN Inc & is not allow to be duplicated without authorization
- 2: RoHS compliant.