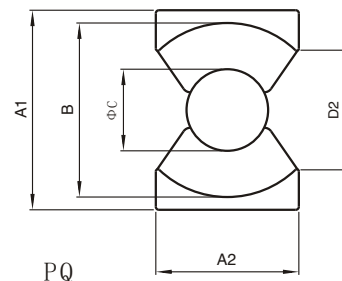
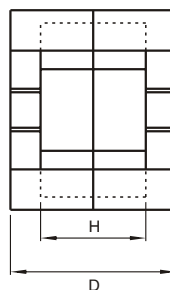
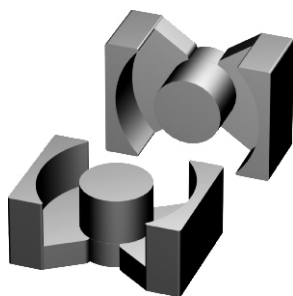


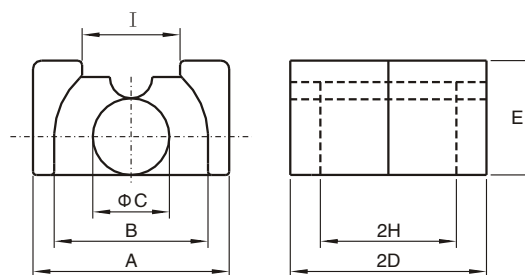
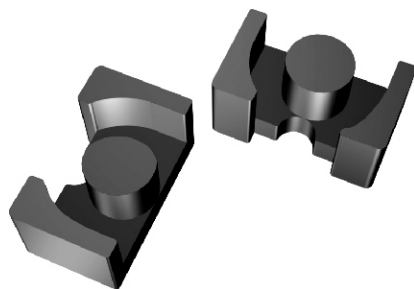
# PQ & LP TYPE CORES



PQ TYPE CORES (MATERIALS): P1, P2, P3  
Dimensions & Effective parameter

CORES TYPE	Dimensions (mm)							Effective parameter					
	A1	A2	B	ΦC	D	E (REF)	H	C1 (mm <sup>-3</sup> )	Ae (mm <sup>2</sup> )	Le (mm)	Ve (mm <sup>3</sup> )	Al ±25% (nH/N <sup>2</sup> )	Weight (g)
PQ2016	20.5±0.4	14.0±0.4	18.0±0.4	8.8±0.2	16.2±0.2	12.0	10.3±0.3	0.605	62	37.1	2310	3880 (P2)	13
PQ2020	20.5±0.4	14.0±0.4	18.0±0.4	8.8±0.2	20.2±0.2	12.0	14.3±0.3	0.738	62	45.4	2790	3310 (P2)	15
PQ2620	26.5±0.45	19.0±0.45	22.0±0.45	12.0±0.2	20.15±0.25	15.5	11.5±0.3	0.391	119	46.3	5490	6170 (P2)	31
PQ2625	26.5±0.45	19.0±0.45	22.0±0.45	12.0±0.2	24.7±0.25	15.5	16.1±0.3	0.472	118	55.5	6530	5250 (P2)	36
PQ3220	32.0±0.5	22.0±0.5	27.5±0.5	13.45±0.25	20.55±0.25	19.0	11.5±0.3	0.323	170	55.5	9420	7310 (P2)	42
PQ3230	32.0±0.5	22.0±0.5	27.5±0.5	13.45±0.25	30.35±0.25	19.0	21.3±0.3	0.464	161	74.6	11970	5140 (P2)	55
PQ3535	35.1±0.6	26.0±0.5	32.0±0.5	14.35±0.25	34.75±0.25	23.5	25.0±0.3	0.448	196	87.9	17260	4860 (P2)	73
PQ4040	40.5±0.9	28.0±0.8	37.0±0.6	14.9±0.3	39.75±0.25	28.0	29.5±0.3	0.508	201	101.9	20450	4300 (P2)	95
PQ5050	50.0±0.7	32.0±0.6	44.0±0.7	20.0±0.35	49.95±0.25	31.5	36.1±0.3	0.346	328	113	37238	6720 (P2)	195

LP TYPE CORES (MATERIALS): H10K, H7K, H6K, P1, P2, P3  
Dimensions & Effective parameter



LP

CORES TYPE	Dimensions (mm)							Effective parameter				AL-value (nH/N <sup>2</sup> ) (1kHz, 0.5mA 100Ts)	Calculated output power (w) (100kHz)	Weight (g)
	A	B	ΦC	2D	E	2H	I	C1 (mm <sup>-3</sup> )	Ae (mm <sup>2</sup> )	Le (mm)	Ve (mm <sup>3</sup> )			
LP23/8	16.5±0.3	12.5±0.3	5.70±0.1	23.4±0.2	8.70±0.2	17.4±0.2	9.0±0.5	1.41	31.3	44.1	1380	1600±25% (P2)	50	9.6
LP22/13	25.0±0.4	19.0±0.3	8.60±0.2	22.4±0.2	12.9±0.3	12.9±0.3	13.5±0.5	0.721	67.9	49.0	3330	3310±25% (P2)	121	21
LP32/13	25.0±0.4	19.0±0.3	8.60±0.2	31.8±0.2	12.9±0.3	12.9±0.3	13.5±0.5	0.909	70.3	64.0	4500	2630±25% (P2)	164	30