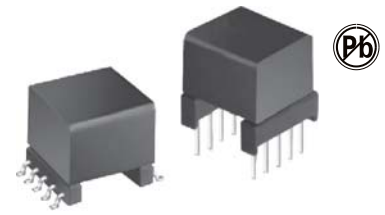


# FAADSL TRANSFORMERS

## FAADSL-100 SERIES



### FEATURES

High Frequency Design  
Excellent THD  
High Reliability

### OPTIONS

Tape & Reel is Standard  
Custom design available

### COMMON APPLICATIONS

FAADSL VDSL Router  
Analog Devices, Alcatel, Globespan.  
Central Office/Customer Premise

### STANDARD SPECIFICATIONS

Part Number	Application	Turns Ratio ±2% Line to Chip	OCL [mH±10%] Line Size	$L_L$ [μH Max]	Longitudinal Balance [dB Min]	DCR [ΩMax]	THD [dB Min]	SCH	Applicable IC
FAADSL-101	CPE	1:1	5.0 [1]	15 [2]	40[25KHz-1.1MHz]	3.0	80@30KHz	1	AD20msP910/918
FAADSL-102	CPE	1:1	0.48 [1]	10 [2]	40[30KHz-1.1MHz]	1.0	72@10KHz	1	MTK-20/40
FAADSL-102A	CO	1:1	0.41 [1]	6.5 [2]	40[30KHz-1.1MHz]	0.6	72@20KHz	1	MTK-20/40
FAADSL-103	CPE	2:1	0.43 [3]	10 [4]	40[25KHz-1.1MHz]	0.45	80@100KHz	2	G7000
FAADSL-105	CPE	1:1	0.407 [1]	9 [2]	40[25KHz-1.1MHz]	0.66	80@100KHz	1	EL-1501

Inertion Loss: 0.5dB max Inductance measured @10KHz 0.1 VRMS Hipot: 1500 VRMS

Remark: Add "S" after Part No. for SMT package

Example: FAADSL-101S for SMT Package: Package B

Notes:

- 1.Measure inductance at pin 1-4 with pin 2-3 shorted.
- 2.Measure leakage inductance at pin 1-4 with 2-3 shorted,and 7-8-9-10 shorted.
- 3.Measure inductance at pin 1-5 with pin 2-4 shorted.
- 4.Measure leakage inductance at pin 1-5 with 2-4 shorted,and pin 6-9-7-10 shorted.

### TECHNICAL INFORMATION

Soldering methods: Wave, Reflow

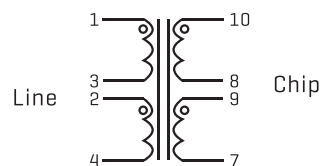
Operating Temperature: 0°C to +70°C

Storage Temperature: -55°C to 125°C

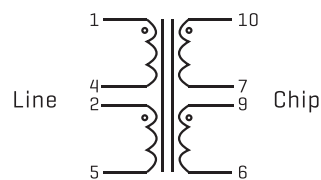
Note:

All specifications subject to change without notice.

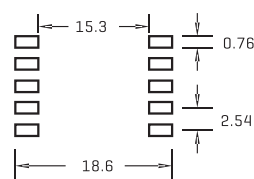
**Schematic 1**



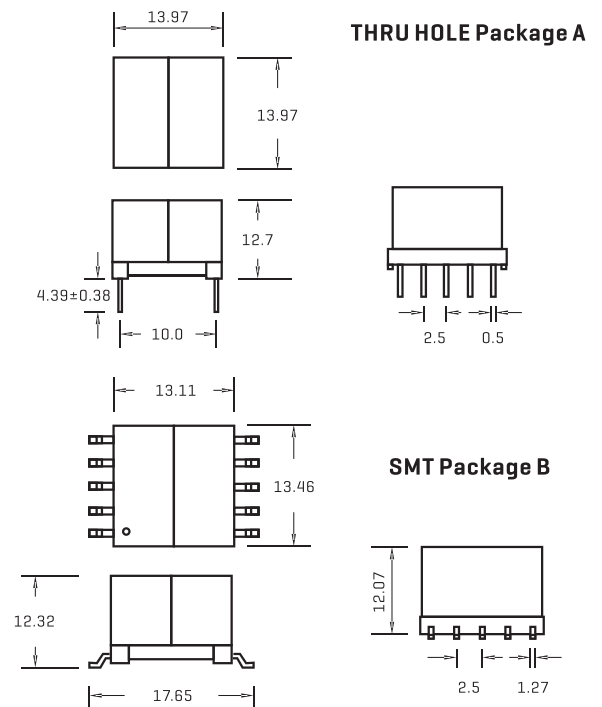
**Schematic 2**



Recommended Pad Layout



### PHYSICAL CHARACTERISTICS



ALL DIMENSIONS IN MM